



Using Vitamin D with AyrScout Cameras

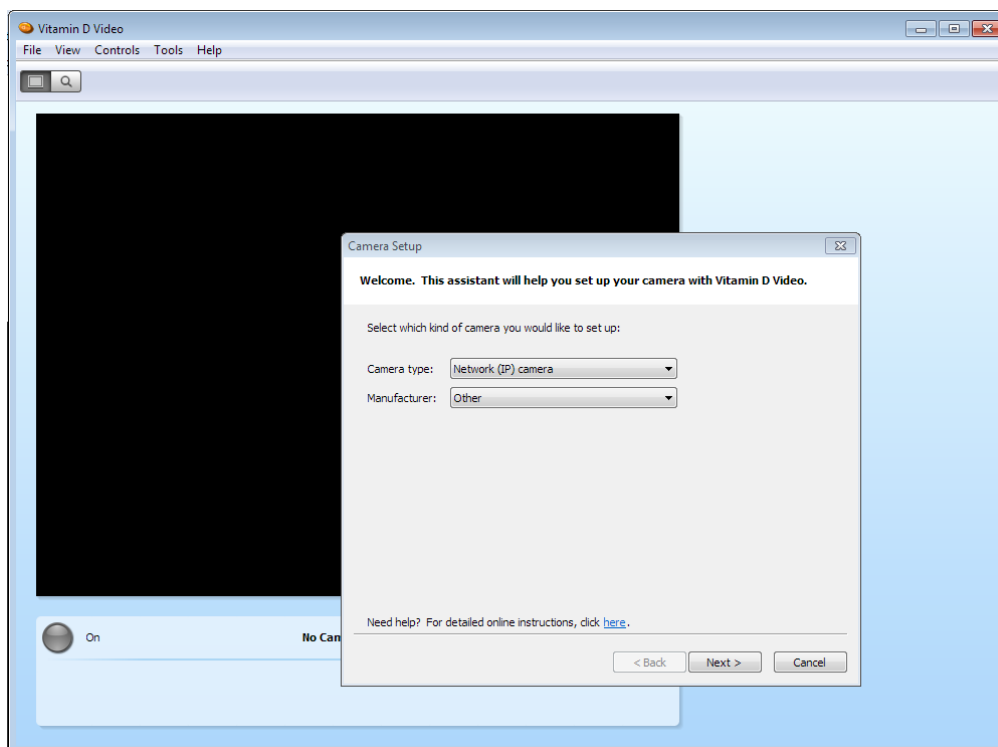
We have evaluated a number of programs for monitoring your AyrScout Cameras. The best we have found so far has been Vitamin D - <http://www.vitamindinc.com/>

Vitamin D is a very good program that is simple to use and set up, and runs on both Windows and Mac.

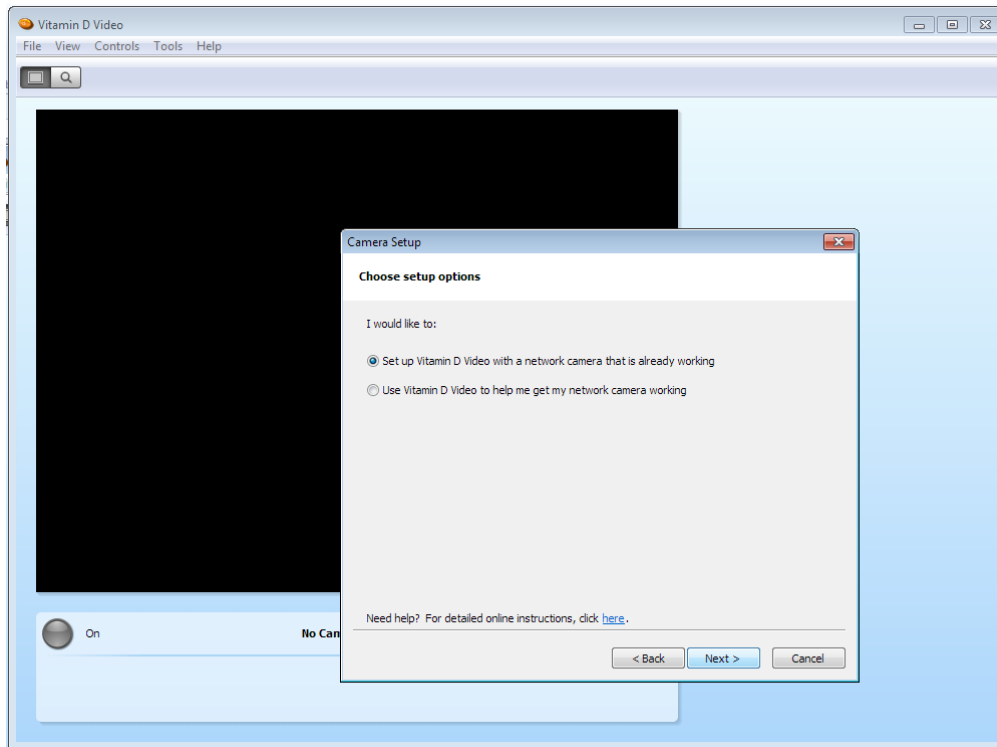
When you start Vitamin D, it immediately starts the Camera Setup assistant. In the first screen, Select as follows:

Camera type: *Network (IP) camera*

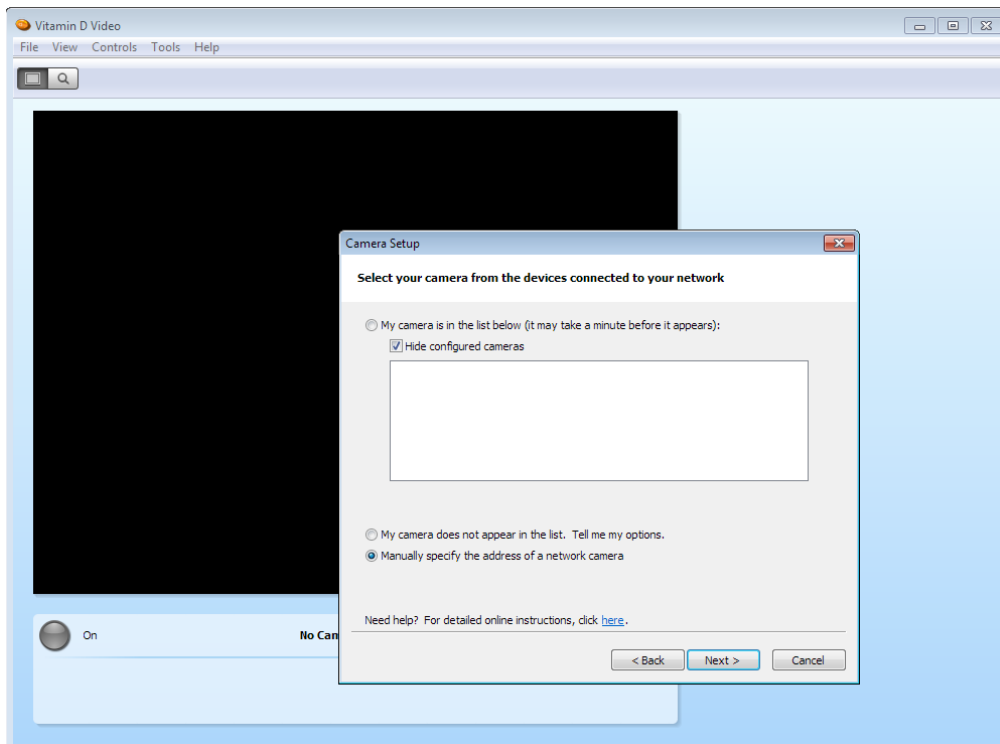
Manufacturer: *other*



Click *Next*; in the next screen, select *Set up Vitamin D for a network camera that is already working*:



Click *Next*; on the next screen, select your camera if it appears on the list. Otherwise select *Manually specify the address of a network camera*:



Click *Next* for the next screen. On this screen, fill in the fields as follows:

Camera type: *Other IP camera*

Protocol: *http*

IP address: this is the Internal (LAN) Link from the Cameras section on aymesh.com (assuming your computer is attached to the AyrMesh network; if it is not, use the External (Internet) Link):

Cameras

	Name	External (Internet) Link	Internal (LAN) Link	Actions
<input type="checkbox"/>	foofoo	14.9002	10.251.45.84	Rename Camera
<input type="checkbox"/>	00:12:7b:54:cc:21	4.9003	10.247.41.89	Rename Camera
<input type="checkbox"/>	7c:dd:90:14:62:38	4.9004	10.247.41.89	Rename Camera
<input type="checkbox"/>	00:12:7b:50:75:7e	4.9005	10.247.41.222	Rename Camera
<input type="checkbox"/>	00:ea:21:63:49:c1	4.9006	10.141.250.51	Rename Camera

[Delete Selected](#)

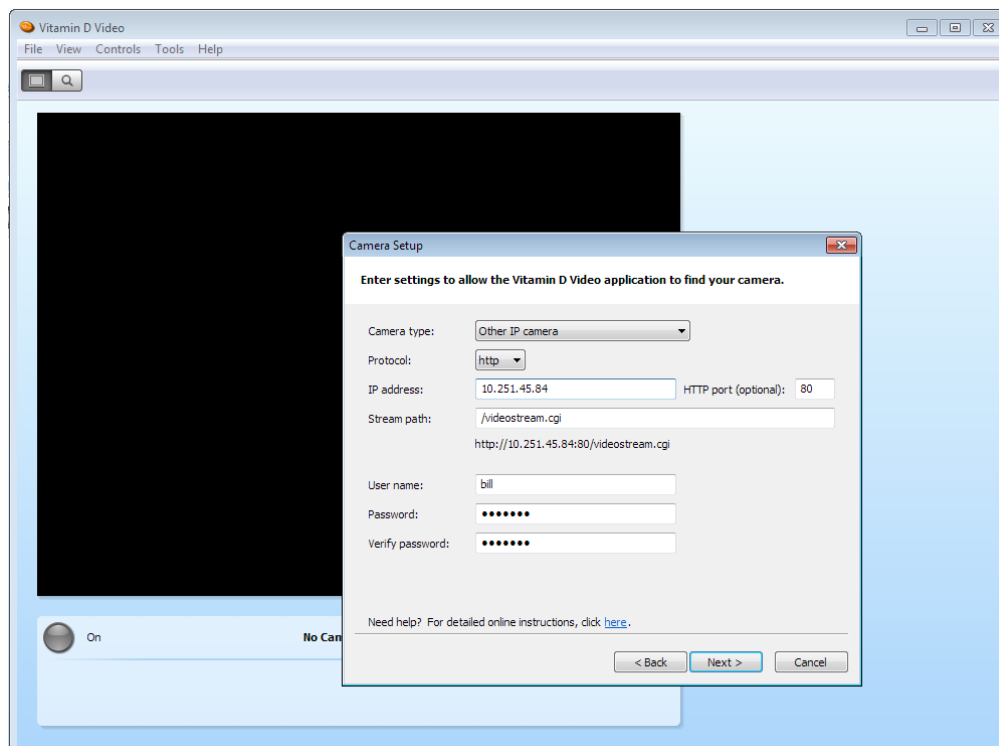
HTTP port: **80**

Stream path: type **/videostream.cgi**

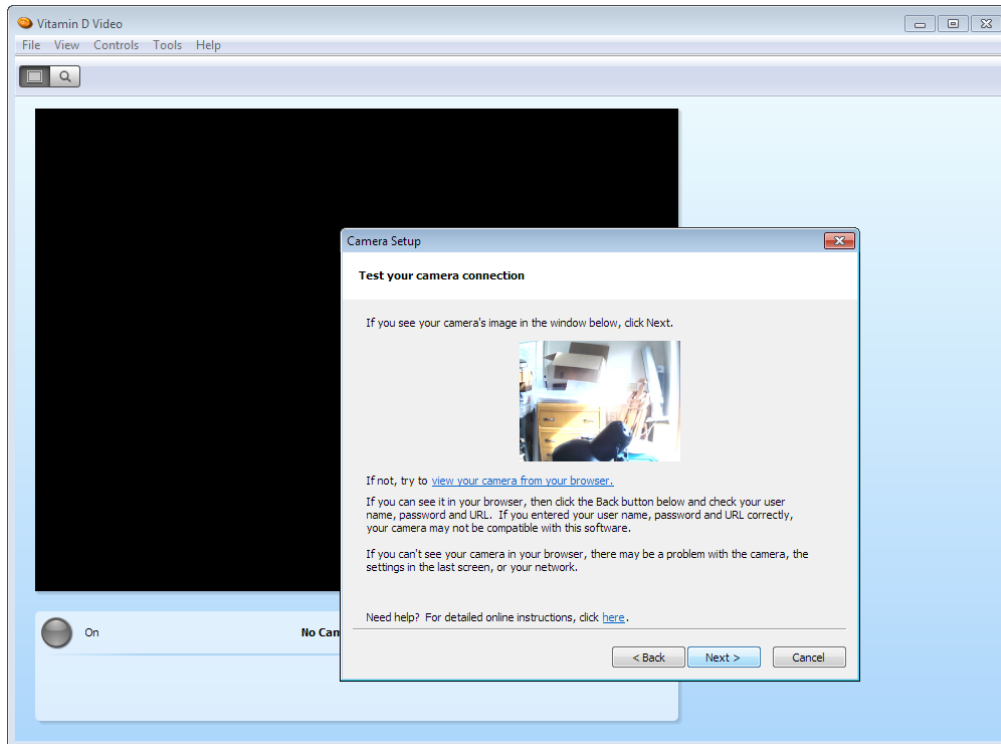
User name: your aymesh.com username

Password: your aymesh.com password

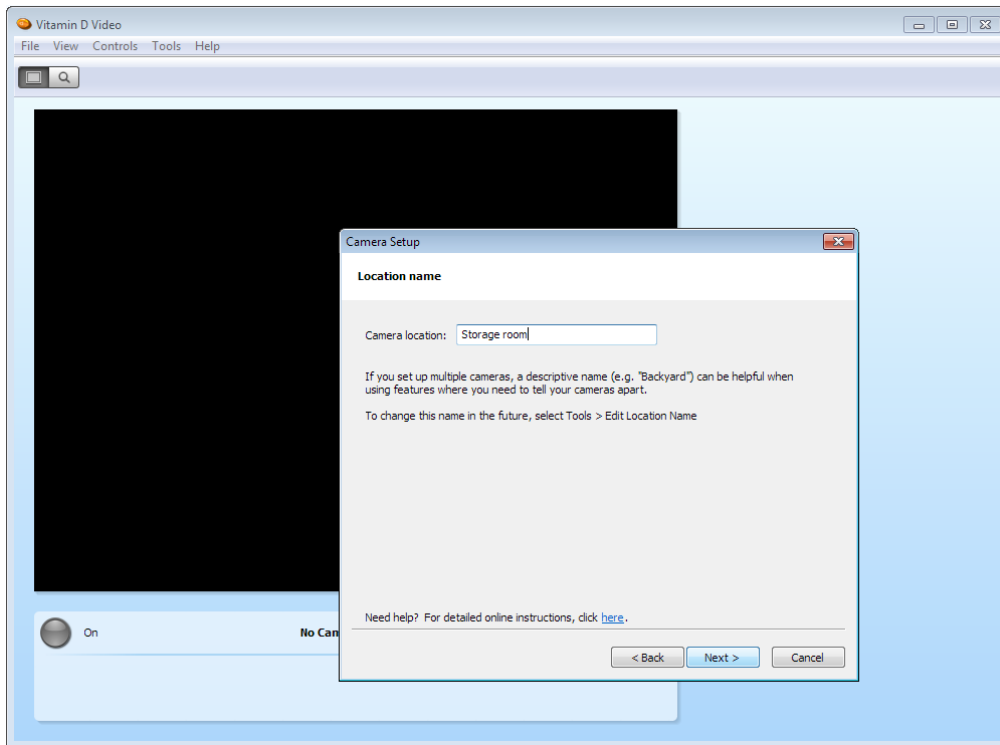
Verify password: your aymesh.com password again



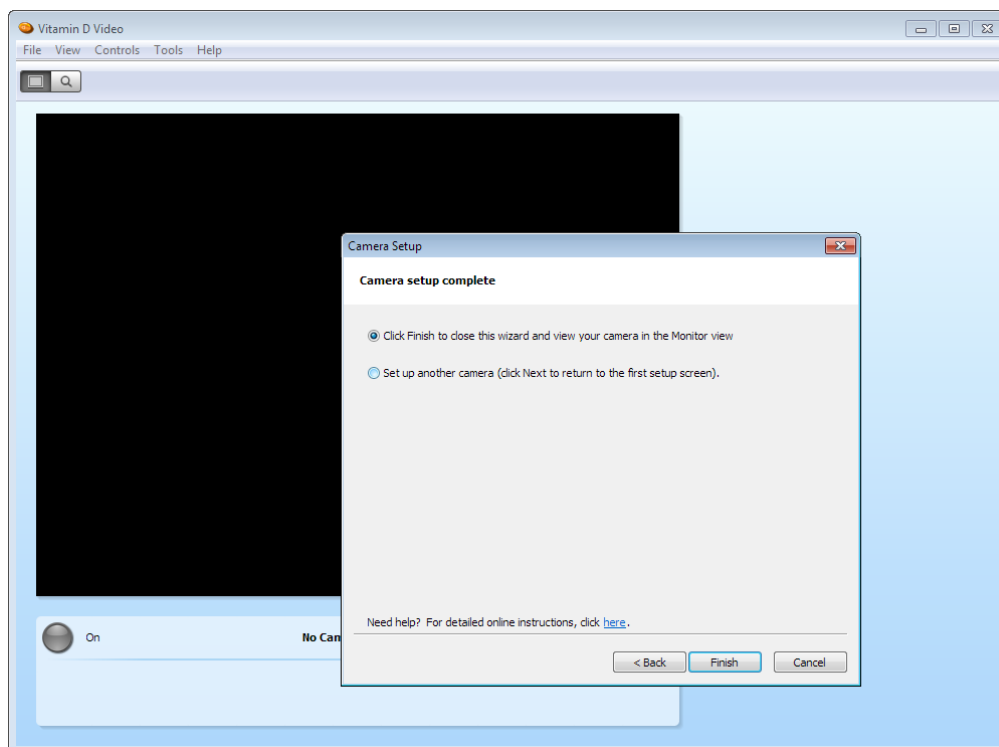
Click *Next* and wait a minute; if you filled in the right values in the previous panel, the camera's picture should appear:



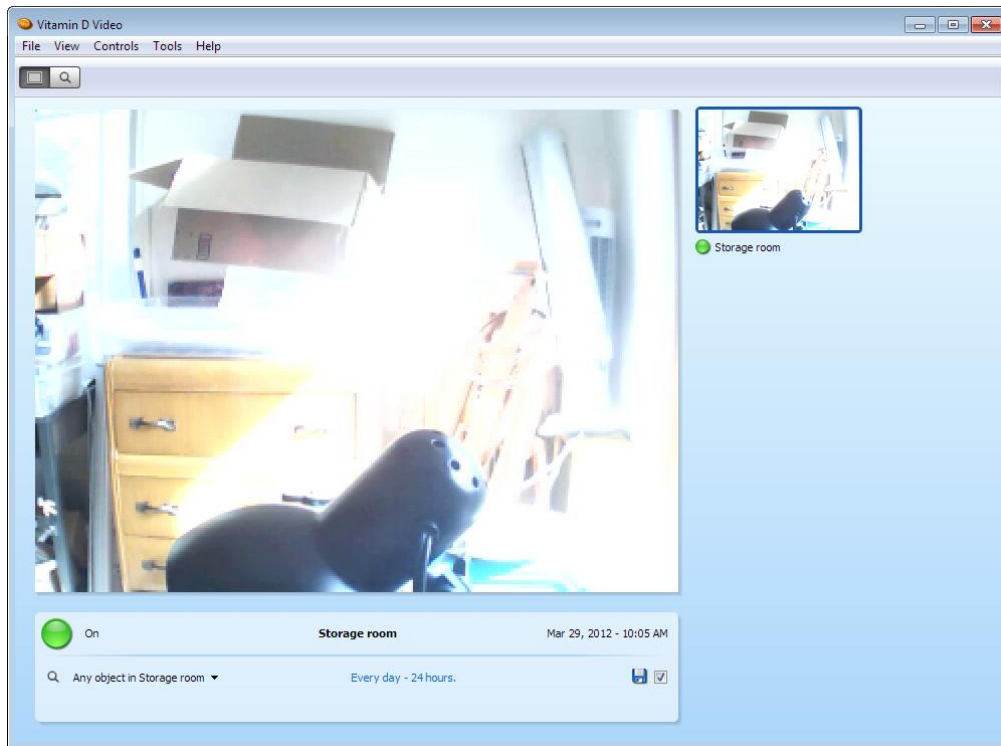
If the picture doesn't come up in a minute or so, click the *Back* button and check your entries on that screen. Once the picture comes up on the screen, click *Next*; in the following screen, give the camera a good, descriptive name:



Click *Next*; if you are only setting up one camera, select *Click Finish to close this wizard*, or select *Set up another camera* to set up another camera. Click *Finish*:



When you are done adding cameras, they'll appear in the Monitor screen:



...and Vitamin D is ready to use. Refer to the videos and other documents on the Vitamin D site for details of how to use the program.