



Ayrstone AyrScout™ Camera Usage

These directions are for using the AyrScout Camera once you have it configured and installed. If you have not installed your camera yet, please refer to the directions that came with the Camera in or in the Support section of Ayrstone.com.

Logging in to your Camera

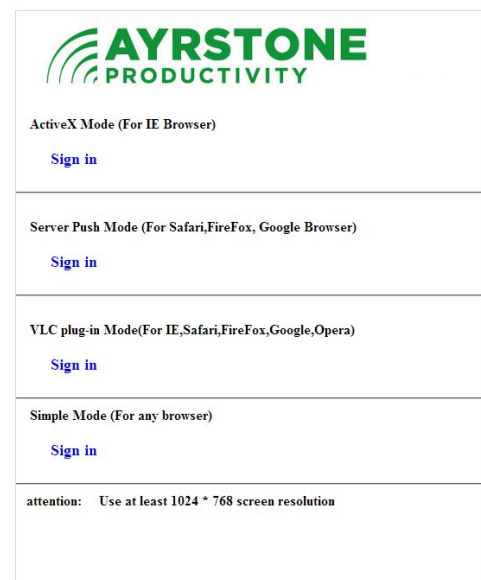
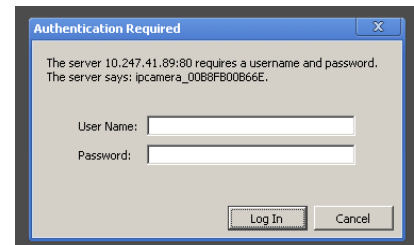
For ease of use, Ayrstone recommends the use of FireFox, Chrome, or Safari browsers. Download these browsers by typing the browser name of your choice in a search engine and follow the instructions for downloading the browser.

Log in to the camera using your aymesh.com username and password. The IP addresses for the camera are shown in the Cameras section of your account on aymesh.com. The *External (Internet) Link* should be used if you are away from home, but may be relatively slow or not even work if you're at home. The *Internal (LAN) Link* should be used if you are at home on a computer connected to your AyrMesh network.

When you click on the appropriate link, you will be prompted for a username and password. Log in using your aymesh.com username and password.

Once you are logged in, you'll encounter the initial screen with several *Sign in* links.

- If you are using Internet Explorer, you can select the link under *ActiveX Mode (For IE Browser)*. We have not found this mode to be very reliable, so we generally suggest using the Snap Motion Mode.
- If you are using FireFox, Chrome, or Safari, you can click on the *Sign in* link under *Server Push Mode (For Safari, FireFox, Google Browser)* – this is the mode we generally recommend if you use one of these browsers.
- If you have installed the VLC plug-in, you can click on the *Sign in* link under *VLC plug-in Mode (For IE, Safari, FireFox, Google, Opera)*. VLC is a very powerful open-source audio and video player available for free from <http://videolan.org>.
- The *Sign in* link under *Simple Mode (For any browser)* will work for any browser, including Internet Explorer and those on

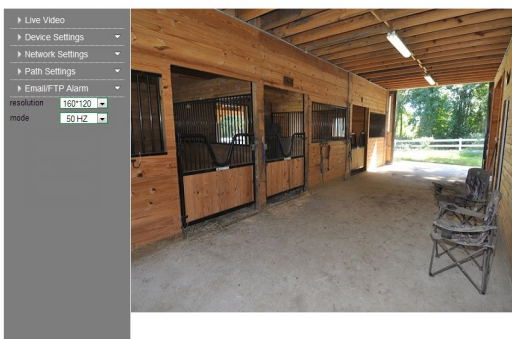


cellphones and tablets. It's a very simple mode that downloads individual pictures very quickly; the motion is not as smooth, but it's more than adequate for keeping an eye on something.

Camera controls are on the left of the window. The best way to learn how to use the camera is simply to try these controls. However, we'll give you a quick overview of these controls.

Controls for All Cameras

The two things that are common for all AyrScout cameras are the size of the picture and the color compensation.

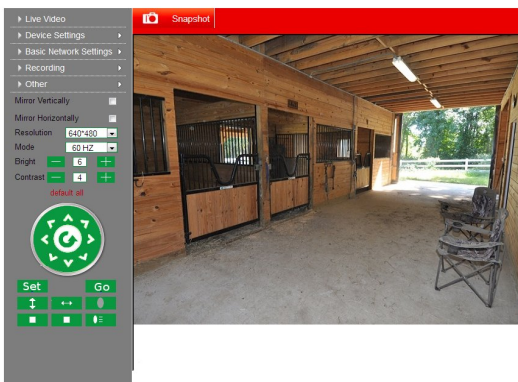


The first control is labeled *resolution* and determines the size of the picture. The Camera is set by default to the largest size, **640x480** pixels. This will give you the largest picture, but a smaller picture will show motion better by providing more frames of motion per second.

The second control is labeled *mode* and is used to compensate for the kind of lighting that is in use. If the Camera is outside, choose **outdoor**; if the

Camera is inside under artificial lights, choose **60 Hz**.

Point and Tilt Cameras Only



The first and most important point in using your camera is simply pointing it where you want to see. If your camera has point and tilt controls, the circle on the left side with arrows pointing in 8 directions allow you to move the lens. Click on the appropriate arrow and the lens will point in the indicated direction.

Immediately below the circle are two extremely useful controls to set and use preset locations. You can use these to guide the camera to look at specific places on command.

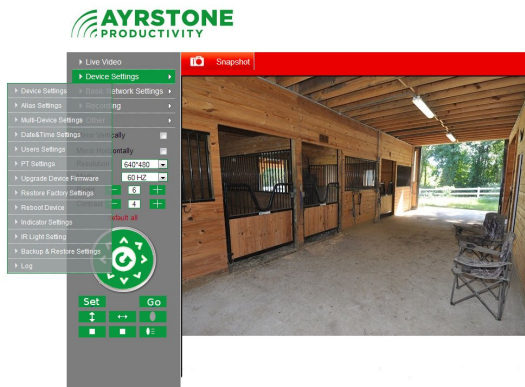
All you need to do is use the arrows to point the camera at something you want to monitor, then click on the **Set** button under the circle. A matrix of numbers appears underneath; click one of those numbers to tell the Camera to remember that spot.

When you have the presets you want, you can then select them with the **Go** button under the circle. When you click on it, an identical matrix of numbers will appear underneath. Click on the appropriate number and the camera will automatically move to the preset location.

Another useful control on the camera is the patrol feature. This moves the lens of the camera continuously either vertically (tilt) or horizontally (pan) until stopped. There are four buttons; starting from the top left, they are used to start vertical patrol, start horizontal patrol, stop vertical patrol, and stop horizontal patrol.

Settings on all Cameras

The buttons in the top right of the camera's interface can be used to change the settings for the camera.



The top *Live Video* button returns you from wherever you are back to the live video.

The next button, *Device Settings*, opens a menu of options. In general, you should not have to change any of these settings, but there are a few that may be useful:

- *Access Control Settings* – when you select this, you'll see your aymesh.com username in the top slot. Do not change that setting! However, you may want to add additional users so others can look at your camera over the Internet without using your aymesh.com username. For instance, some people like to add a user called **anyone** with no password and *Visitor* privileges so others (who know the IP address and port number of the camera) can view the camera but not control it or change the settings. If you add a user with *Operator* privileges, the user can view and control the camera, but not change the settings. Finally, if you add a user with *Administrator* privileges, that user can view, control, and reconfigure the Camera. We do not suggest creating any accounts with Administrator privileges.
- *PT Settings* – these settings control how fast or slow the Camera pans and tilts using the arrows and the patrol feature (for Cameras with pan and tilt capability).
- *Restore Factory Settings* restores the camera to its factory settings. You'll need to re-initialize the camera by plugging it into an AyrMesh Router or Remote Hub to configure it.
- *Reboot Device* will reboot the camera – occasionally but not usually helpful.
- *Indicator Settings* allows you to turn the indicator LEDs on and off.

The next two buttons are *Network Settings* and *Path Settings*; these do not have any settings you should change.

The final button is called *Email/FTP Alarm* or *Other*. We'll cover the use of that menu in the Advanced Usage section

There are also settings that can be used to flip and mirror the image (useful if the

camera is mounted upside down) and change the brightness and contrast of the image, although these controls are only present in the *Active X mode* or *Simple mode*.

In these modes, there is also a snapshot link that will bring up a still picture of the image on the screen so you can save it on your computer.

Advanced Usage

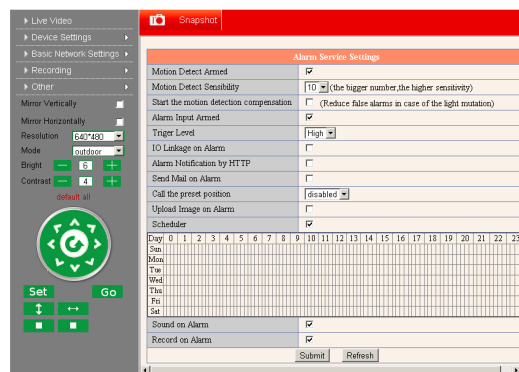
The AyrScout camera has the ability to detect motion in its field of view and take action when it detects motion.

On the *Other* menu, there are three options

- *Mail Service Settings* – configure the camera to automatically mail you a still picture when motion is detected.
- *FTP Service Settings* – configure the camera to automatically upload a still picture to an FTP server of your choice, either on a regular basis or when motion is detected.
- *Alarm Service Settings* – configure the motion sensing capability of the camera.

Alarm Service Settings

Use this screen to set up the motion detection capabilities of the camera. Note that the motion detection is elementary, but it does work – we use an AyrScout camera pointed at the door of the office here, and we get alerts every time the door opens or closes, or, if the door is open, every time someone walks past.



The particular settings:

Motion Detect Armed – checked to turn on motion detection

Motion Detect Sensibility – suggest starting at “5” and move up or down as necessary. Too high a number will cause “false alarms,” while too low a number may cause you to miss a real problem.

Send Mail on Alarm and *Upload Image on Alarm* – if checked, will email a set of images or upload a set of images when motion is detected, using the settings in *Mail Service Settings* and *FTP Service Settings*.

Send Alarm Notification by Http – if checked, the camera will “hit” the URL indicated on the following line. This can be used with certain web-based notification tools.

Scheduler – if left unchecked, motion detection will be **on** at all times. If checked, you can use the scheduler to turn motion detection on and off during the week.

The Scheduler provides a set of boxes for every 15-minute period during the week, and you click in the box to turn on detection. There are, therefore, 672 boxes, and

you have to click in each box corresponding to the 15 minutes you want to have motion detection on.

Mail Service Settings

Filling in this page allows the camera to email pictures to you. The *Sender* can be anything (we usually set it as “**camera1@ayrstone.com,**” “**camera2@ayrstone.com,**” etc.), the *Receivers* will be the email address(es) to whom you want to send the pictures. *SMTP server, port, Transport Layer Security, and Need Authentication* depend on your email provider. If you have your email provided through your ISP, they should be able to provide this to you. Always click on *Submit* before you click on *Test*.



FTP Service Settings

Like the Email settings, the FTP settings allow you to specify a point to which the camera can upload an image, either when the alarm is tripped or at a regular interval. The server settings are straightforward; always use **PASV** mode and always click on *Submit* before clicking on *Test*. If you want to send an image at a regular interval, click on *Upload Image Now* and another line will appear for the interval (in seconds) between uploads of the picture.



Using these features, you can easily set up an AyrScout Camera to detect motion within its field of view and notify you via several different methods.